



### Assembly Guide for Prokraft Shmill Kit

The Prokraft Shmill is a combination shaker and mill kit which features a premium ceramic grinder. It is made exclusively for Prokraft to UK/EU specification with drill sizes required in millimetres

Please read this guide fully before beginning.

The dimension diagrams shown are for a 1/3 salt to 2/3 pepper combination but they can be made to almost any proportions as long as the total blank length is 150mm.

You will require a blank minimum 150mm x 60mm (allow extra length for wastage)

Drill sizes required: 38mm, 25mm, 10mm (1.5mm for pilot holes)

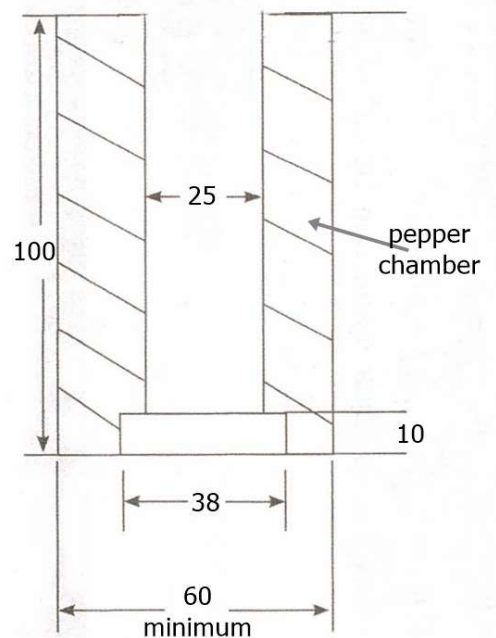
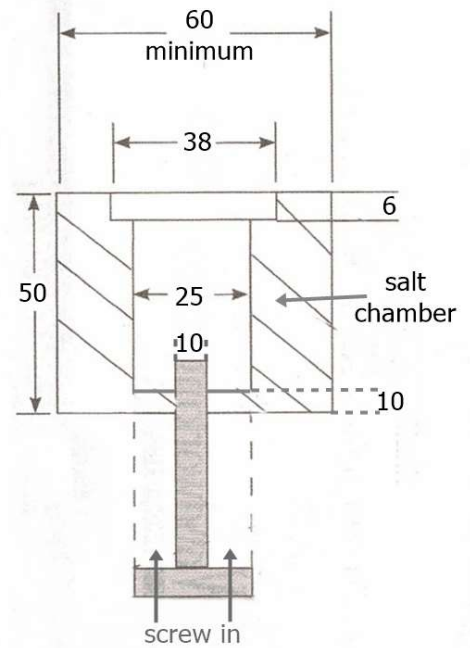
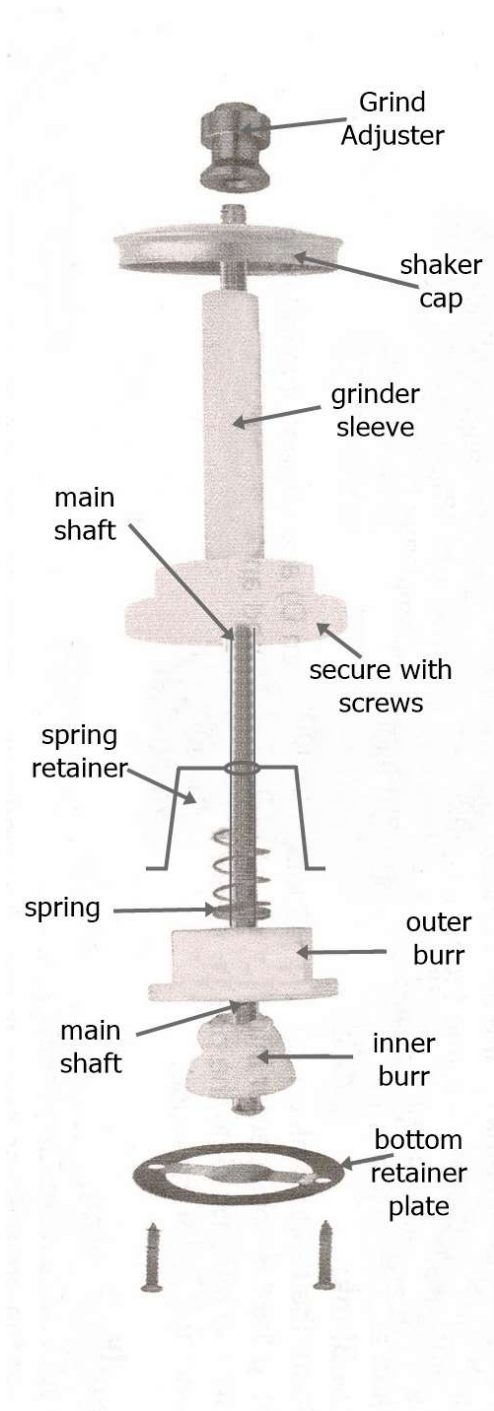
We do not advise on how to mount your pieces as this depends on personal preference and the equipment you have available. Some like to use a jam chuck, others a standard chuck in expanding mode. We often use a chuck and make a wooden drive centre from scrap to mount between centres with a live tailstock.

The salt and pepper chambers can be mounted and turned individually or with the grinder sleeve fitted both parts together (use plenty of pressure to hold the 2 parts together if using this method)

We advise using a 1.5mm drill for screw pilot holes and a PH1 x-head screwdriver for fitting, test fitting the screws first is advised. Do NOT use pozi drive /PZ screwdrivers they are not the correct size and may strip the screw heads.

Please see the diagrams on the next page for where to drill the apertures and how to assemble the kit.

The grinder mechanism is inserted into the bottom of the pepper chamber and secured by screwing in the bottom retainer plate.



These are fun kits to make and produce a quality end product, we hope you enjoy making them.